



ITT

Aerospace Controls

Fuel Boost Pumps



Features

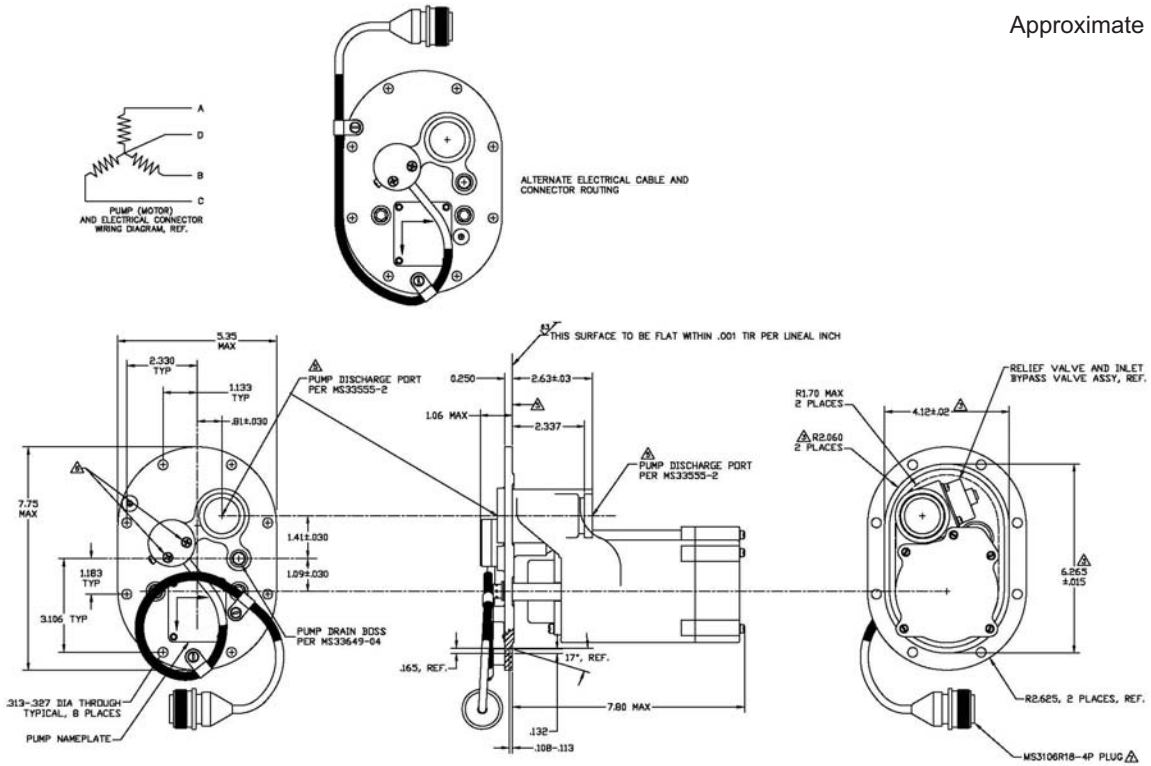
- SFAR 88 Compliant
- AC Induction motor driven centrifugal pump
- Fully qualified for aircraft service
- 115 VAC, 3-phase, 400 Hz input power
- Fuel cooled motor - no supplemental cooling is needed
- Fuel lubricated bearings - no supplemental lubrication is needed
- Direct-drive between the motor and the pump's impeller - no shaft seal
- Explosion suppression housing (meets NAVAIR HDBK 06-5-504)
- Qualified for a minimum of 1,000 hours of Dry Running at altitude pressures up to 60,000 feet and 160°F - verified by repeated tests
- Non-resettable thermal fuses provide a last-defense safety shutdown
- Bottom tank mounted or through-the-tank mounting versions available

Engineered for life

Fuel Boost Pumps

Basic Dimensions

Approximate weight 7.5 lbs



Nominal Performance

ITT AEROSPACE CONTROLS — BOOST PUMP PERFORMANCE

