



ITT

Aerospace Controls

Modular Potable Water Valves



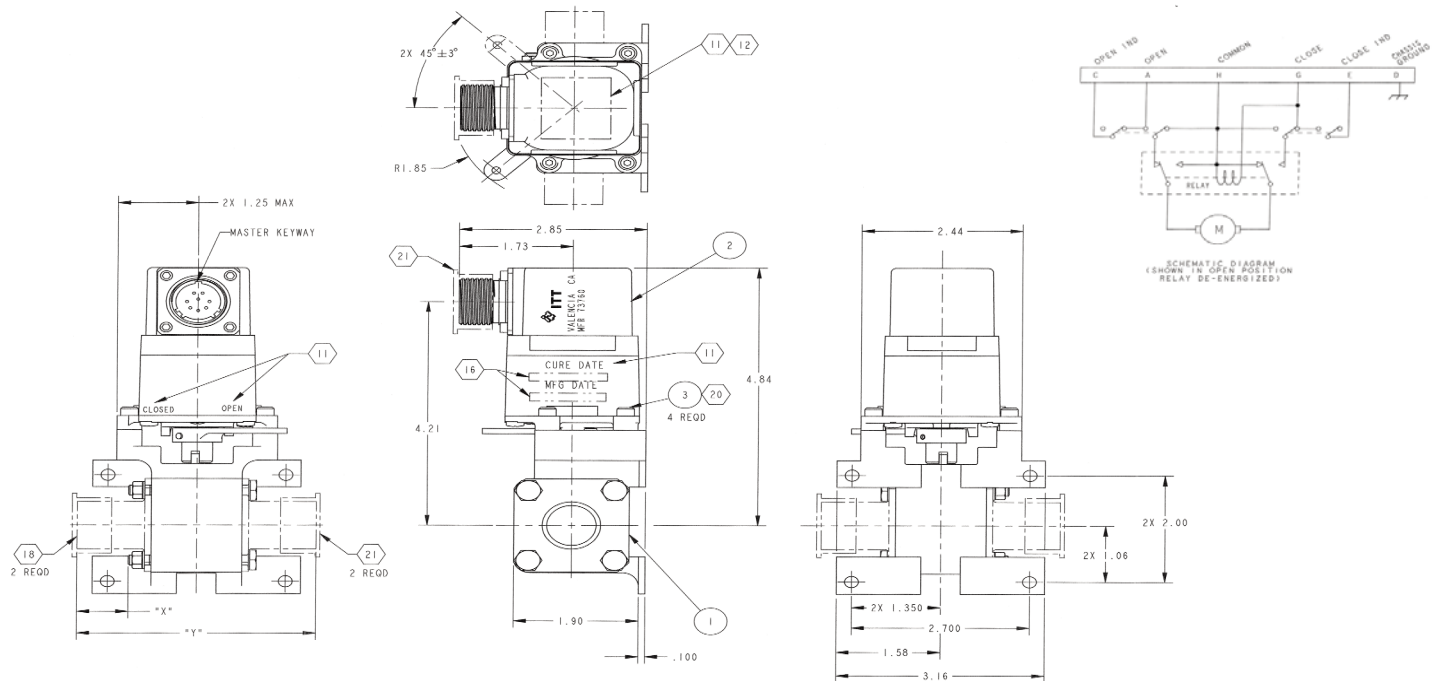
Features

- Modular configurations for rapid delivery
- Line sizes from .5 to 1 inch
- Fitting specification per AS1656 and AS33514 (other options available)
- Dual valve configuration for Two Position 3 & 4 Way applications are available
- 28 VDC power or Manual Actuation
- EMI Filter option available

Engineered for life

Modular Potable Water Valves

Basic Dimensions



Valve Configuration Options

DASH NO.	NOM TUBE SIZE	BODY, VALVE ASSY	FITTING	"X"	"Y"
AV24B3177N*-08	.500	125838HW -08	60372GY -08	.725	3.518
" -10	.625	" -10	" -10	.725	3.518
" -12	.750	" -12	" -12	.765	3.600
" -16	1.000	" -16	" -16	.830	3.730
AV24B3177T#-08	.500	125838HY-08	60372HF -08	.577	3.222
" -10	.625	" -10	" -10	.640	3.348
" -12	.750	" -12	" -12	.660	3.380
" -16	1.000	" -16	" -16	.706	3.478

* Part number containing a "N" have port fittings per AS1656

Part number containing a "T" have port fittings per AS33514