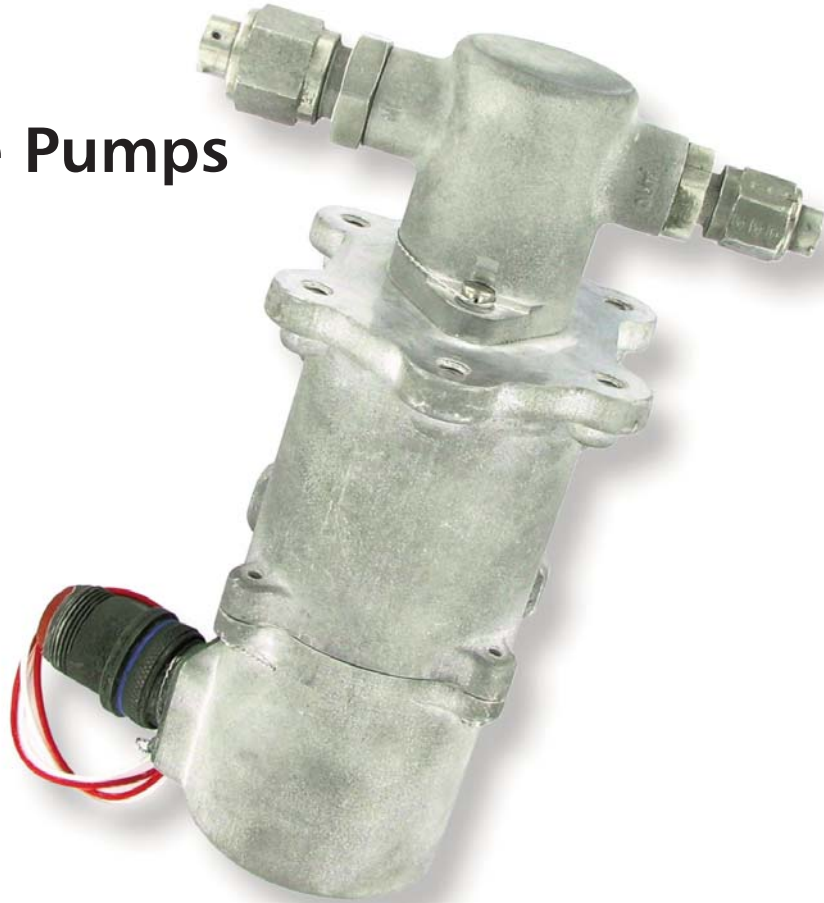




# ITT

## Aerospace Controls

### Scavenge Pumps



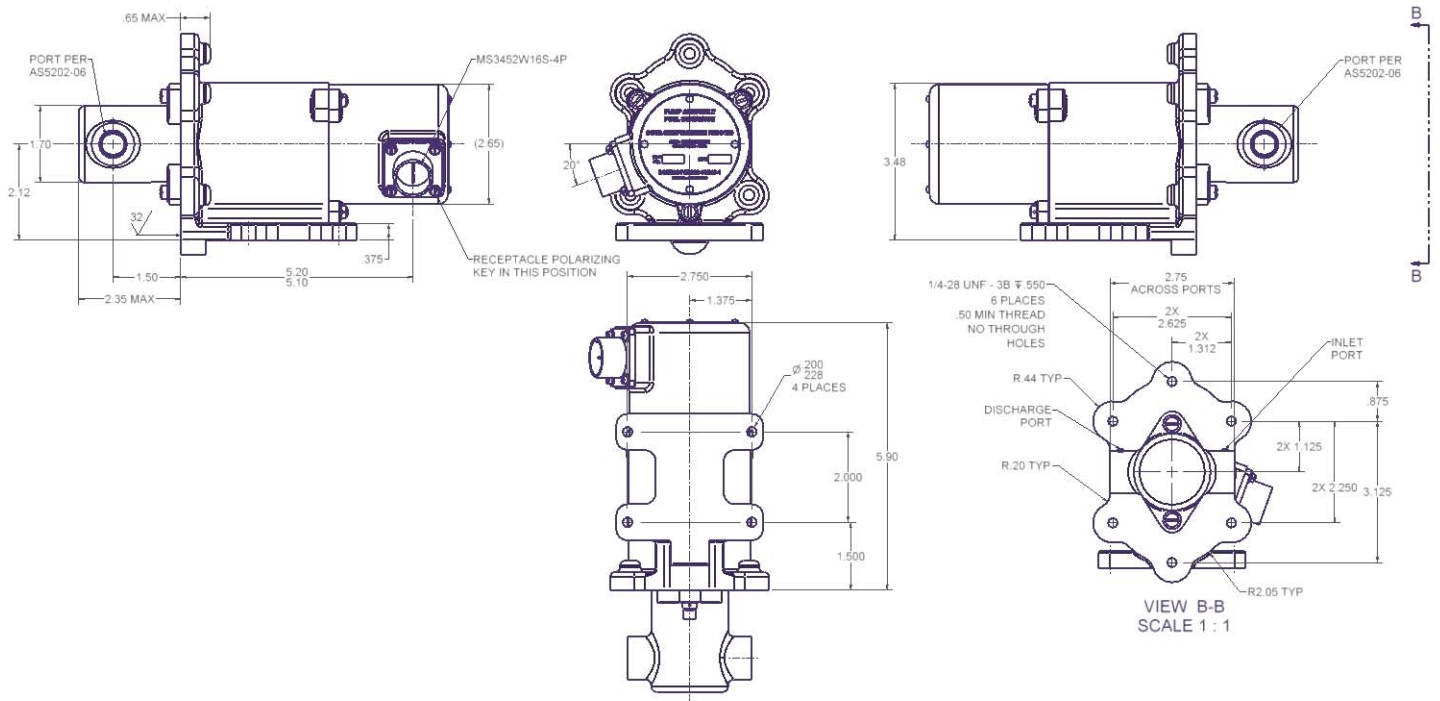
#### Features

- SFAR 88 Compliant
- AC Induction motor driven positive displacement pump
- Fully qualified for aircraft service
- 115 VAC, single-phase, 400 Hz input power  
(3-phase input power option available)
- Fuel cooled motor – no supplemental cooling is needed
- Fuel lubricated bearings – no supplemental lubrication is needed
- Direct-drive between the motor and the pump's impeller – no shaft seal
- Explosion suppression housing (meets NAVAIR HDBK 06-5-504)
- Qualified for a minimum of 1,000 hours of Dry Running (driving motor and pump)
- Non-resettable thermal fuses provide a last-defense safety shutdown
- Self-priming with a suction lift of 10-feet minimum

*Engineered for life*

# Scavenge Pumps

## Basic Dimensions



## Nominal Performance

- SELF PRIMING
- 2.5 GPM FUEL FLOW AT 5.0 PSID MINIMUM
- 2 AMPS NOMINAL WITH SINGLE-PHASE 115 VAC, 400 Hz INPUT POWER
- APPROXIMATE WEIGHT 5 LBS